



MONTHLY MEMBERSHIP PROGRESS REPORT

District 19 E

Results as of: 04/30/2018

GMT: HOWARD HUDSON

LOCATION WASHINGTON

GMT CA

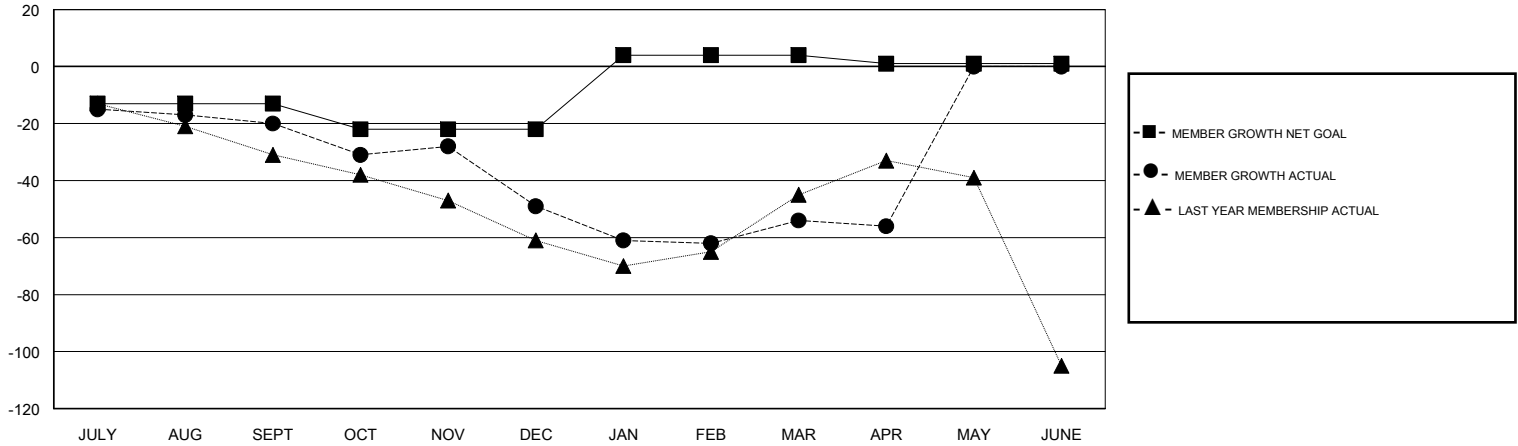
Clubs			
RESULTS FOR 2017-2018			
QUARTER	NEW CLUB GOAL	NEW CLUBS	DROPPED CLUBS
JULY/AUG/SEPT	0	0	0
OCT/NOV/DEC	0	0	1
JAN/FEB/MAR	1	0	0
APR/MAY/JUNE	0	0	0

Members			
RESULTS FOR 2017-2018			
QUARTER	MEMBER GROWTH NET GOAL	MEMBER GROWTH ACTUAL	DROPPED MEMBERS ACTUAL (including transfers)
JULY/AUG/SEPT	-13	43	56
OCT/NOV/DEC	-9	42	69
JAN/FEB/MAR	26	52	49
APR/MAY/JUNE	-3	10	10

GOALS AND ACTUAL NEW CLUBS CUMULATIVE



GOALS AND ACTUAL MEMBERS CUMULATIVE



DROPPED CLUBS: 1	34 CLUBS OF 50 ADDED 1 OR MORE NEW MEMBERS	<u>GENDER DISTRIBUTION</u>	
DROPPED MEMBERS		MALE	857 (64.00%)
DECEASED	17	FEMALE	482 (36.00%)
CLUB CANCELLED	7	Women Percentage Fiscal Year Goal: 35%	
OTHER	160	TOTAL FAMILY UNIT MEMBERS	389
TOTAL	184	FAMILY MEMBERS PAYING HALF DUES	199

[CLICK HERE FOR CUMULATIVE MEMBERSHIP DATA](#)